

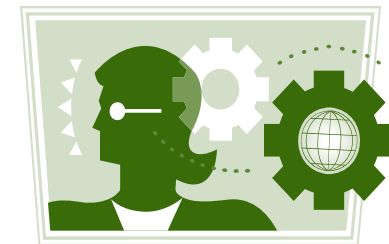
Schedule of Events

Date	Topic
September 21, 2005	<p align="center">Women & Careers: “Back to the Workforce”</p> <p>Issues regarding women returning to the workforce after being out due to childbirth, illness, caring for others or other reasons by choice. Topics will include job assessments and re-entering the workplace, legal rights under federal and state family leave laws, and proactive company policies.</p>
October 19, 2005	<p align="center">Marriage: “Before, During and After”</p> <p>Issues regarding dating and pre-marriage counseling, marriage counseling; prenuptial agreements, divorce planning and what to expect during the divorce process; and life after marriage – how divorcees and widows can move on both emotionally and financially.</p>
November 16, 2005	<p align="center">Women’s Health Issues: “2006 Update”</p> <p>Hear the latest information regarding a host of health issues affecting women today. A panel of healthcare professionals will speak on the latest diagnostic and treatments available.</p>
January 18, 2006	<p align="center">Financial Success: “From Debt to Wealth”</p> <p>Hear tips on debt management, the inside scoop on credit scoring and investment advice. Get back on track if you’re off the track, and further down the track if you’re already on it.</p>
March 15, 2006	<p align="center">New Jersey’s Women of Influence: “My Story”</p> <p>A distinguished panel of New Jersey female leaders will share their stories with you. Hear about opportunities created, obstacles overcome and “making it to the top.” Panelists will represent business, sports, academics and government.</p>
April 19, 2006	<p align="center">Women Through the Generations</p> <p>This panel presentation will cover issues relating to women at various stages of life: (i) single and free; (ii) new mothers; (iii) “I have a teenage werewolf”; and (iv) “grandma’s cooking.” Social lives, parenting, job satisfaction and golden years issues will be discussed. No matter what stage you are in, you will relate to these speakers.</p>
May 17, 2006	<p align="center">Political and Social Issues: “Getting Involved”</p> <p>Speak up, ladies! Learn how Trenton works. Hear from a State Assemblywoman and a watchdog organization. Find out how you can get effect change upon community and women’s issues.</p>
June 21, 2006	<p align="center">Keys to a Successful Relationship; “Men, Women, Venus, Mars”</p> <p>Psychologists and relationship experts will share their views on the dating scene, communications between couples and sexuality issues.</p>



WIT

Women in Transition



Networking through Education

Who We Are

Founded in October 2003 by the female attorneys of Budd Larner, P.C. and Katherine Walczak, VP, Branch Manager, JPMorgan Chase Bank, **Women In Transition (“WIT”)** is an educational and support network dedicated to helping women.

Mission

WIT focuses on specific issues and challenges facing women today. Our topics include business, career, marital changes, finances, health & wellness as well as other aspects of women’s lives.

The group promotes a supportive, education-based environment tailored to women seeking help and professional guidance through lifestyle changes.

Members of WIT have the opportunity to meet other women who are going through similar changes, while learning about legal, financial and emotional issues affecting them.

Invite a friend who may also benefit from this group. We look forward to seeing you.



A local group dedicated to providing women with information and networking opportunities.

MEETING AGENDA

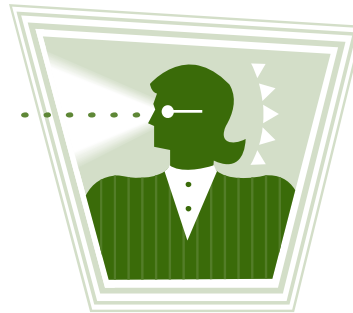
(Refreshments will be served)

5:45 p.m. Pre-registration

- Group Purpose & Overview
- Attendee Introductions
- Topic Presentations
- Panel Q & A
- Open Forum

8:00 p.m. Conclusion

*Membership is complimentary.
Bring A Friend!*



**All meetings held at
Budd Larner, P.C.
150 John F. Kennedy Parkway
Short Hills, NJ 07078
(next to the Short Hills Mall)**

Sponsors

Susan Reach Winters, Esq.
Chair, Family Law Department
Budd Larner, P.C.
973.315.4408
swinters@budd-larner.com

Katherine Walczak
VP, Branch Manager
JPMorgan Chase Bank
973.410-1436
katherine.w.walczak@jpmchase.com

Judy Chapman
Garden State Women Magazine
908.879.7143
jchapman@gswoman.com

*Space is limited.
Please register in advance.*

RSVP

Lia Hempel
Budd Larner, P.C.
150 John F. Kennedy Pkwy.
Short Hills, NJ 07078
tele 973.379.4800 ext. 6439
fax 973.379.7734
e-mail lhempel@budd-larner.com
www.buddlarner.com/WIT